

HAMILTON-HF90 Breathing circuit set setup, Neo/Ped

Setup guidelines for connecting a neonatal/pediatric breathing circuit set to the HAMILTON-HF90

Before proceeding

Review the safety information and check the following:

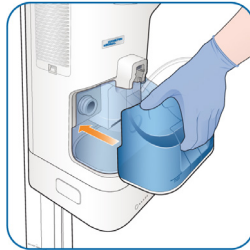
- Have available all of the components you need to deliver the treatment. Ensure that you have selected the appropriate interface type and size for your patient.
- Check the breathing circuit set for damage prior to use. Discard the breathing circuit set if there is any sign of damage.

Connecting the breathing circuit set to the HAMILTON-HF90

1. Remove the cap from the gas outlet adapter.



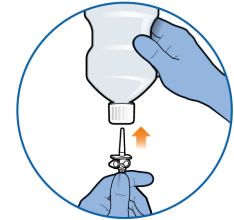
2. Insert the humidification chamber into the device.



3. Connect the breathing circuit.



4. Connect the water supply.



Positioning the breathing circuit set and device

After assembly, place the breathing circuit and device so that:

- The device is placed lower than the patient level.
- The air intakes on the sides of the device are not blocked or covered. These openings are for the breathing air intake and cooling fan.

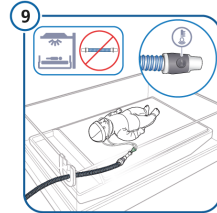
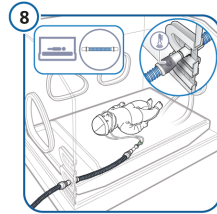
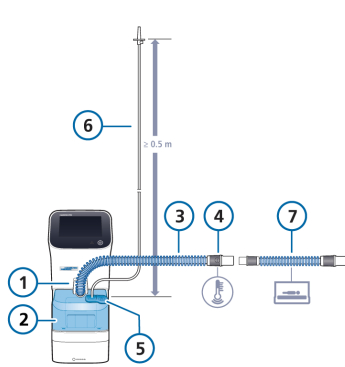
- Connect the breathing circuit to the inspiratory outlet. Ensure it clicks into place.
- Remove the cap positioned on the patient end of the breathing circuit before connecting the circuit with the interface or incubator extension.

- Only use sterile, demineralized water to fill the humidification chamber.
- Place the water supply at least ≥ 0.5 m above the device.

Before beginning patient treatment

Only connect patients to nasal or tracheostomy interfaces specifically designed for high flow oxygen therapy; these types of interfaces allow the patient to exhale.

Breathing circuit set, single limb, neo/ped



- | | |
|--|---|
| 1 Breathing circuit connection (inspiratory outlet to patient) | 6 Water feed line with spike |
| 2 Humidification chamber | 7 <i>Neonatal only.</i> Incubator Extension, for use in incubator with neo/ped breathing circuit sets
PN 10103261 and 10119946 |
| 3 Heated breathing circuit | 8 <i>Neonatal only.</i> Incubator setup |
| 4 Connection to patient interface or incubator extension, temperature sensor | 9 <i>Neonatal only.</i> Warming bed setup |
| 5 Nebulizer port | |

Positioning the breathing circuit set and device

After assembly, place the breathing circuit and device so that:

- The device and circuit do not come into contact with direct air flow from air conditioning or direct sun.
- The heated circuit is not placed directly on the patient's skin.
- The circuit is without tension and will not be pushed, pulled, or kinked as a result of a patient's movement, transport, or other activities.
- Any condensation flows back into the humidification chamber, not toward the patient.
- The circuit and tubing are left uncovered and are on top of any sheets or bedclothes.
- *Neonatal only.* The incubator extension is connected to the breathing circuit and can only be used inside the incubator.
- *Neonatal only.* Always place the heated limb with the temperature probe outside of the incubator.