

# HAMILTON-HF90 Breathing circuit set setup, Neo/Ped

Setup guidelines for connecting a neonatal/pediatric breathing circuit set to the HAMILTON-HF90

## Before proceeding

Review the safety information and check the following:

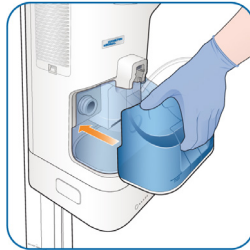
- Have available all of the components you need to deliver the treatment. Ensure that you have selected the appropriate interface type and size for your patient.
- Check the breathing circuit set for damage prior to use. Discard the breathing circuit set if there is any sign of damage.

## Connecting the breathing circuit set to the HAMILTON-HF90

1. Remove the cap from the gas outlet adapter.



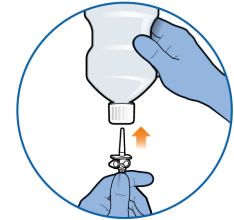
2. Insert the humidification chamber into the device.



3. Connect the breathing circuit.



4. Connect the water supply.



## Positioning the breathing circuit set and device

After assembly, place the breathing circuit and device so that:

- The device is placed lower than the patient level.
- The air intakes on the sides of the device are not blocked or covered. These openings are for the breathing air intake and cooling fan.

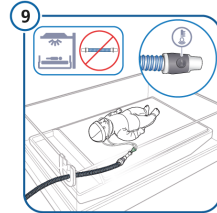
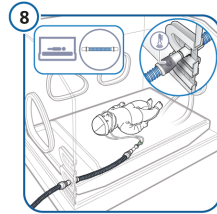
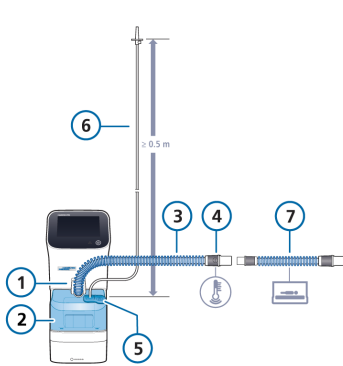
- Connect the breathing circuit to the inspiratory outlet. Ensure it clicks into place.
- Remove the cap positioned on the patient end of the breathing circuit before connecting the circuit with the interface or incubator extension.

- Only use sterile, demineralized water to fill the humidification chamber.
- Place the water supply at least  $\geq 0.5$  m above the device.

## Before beginning patient treatment

Only connect patients to nasal or tracheostomy interfaces specifically designed for high flow oxygen therapy; these types of interfaces allow the patient to exhale.

## Breathing circuit set, single limb, neo/ped



- |  |   |
|--|---|
| 1 Breathing circuit connection (inspiratory outlet to patient)               | 6 Water feed line with spike  |
| 2 Humidification chamber   | 7 <i>Neonatal only.</i> Incubator Extension, for use in incubator with neo/ped breathing circuit sets<br>PN 10103261 and 10119946 |
| 3 Heated breathing circuit   | 8 <i>Neonatal only.</i> Incubator setup   |
| 4 Connection to patient interface or incubator extension, temperature sensor | 9 <i>Neonatal only.</i> Warming bed setup   |
| 5 Nebulizer port   |   |

## Positioning the breathing circuit set and device

After assembly, place the breathing circuit and device so that:

- The device and circuit do not come into contact with direct air flow from air conditioning or direct sun.
- The heated circuit is not placed directly on the patient's skin.
- The circuit is without tension and will not be pushed, pulled, or kinked as a result of a patient's movement, transport, or other activities.
- Any condensation flows back into the humidification chamber, not toward the patient.
- The circuit and tubing are left uncovered and are on top of any sheets or bedclothes.
- *Neonatal only.* The incubator extension is connected to the breathing circuit and can only be used inside the incubator.
- *Neonatal only.* Always place the heated limb with the temperature probe outside of the incubator.