

## 1 Overview

The Masimo SET<sup>®</sup> pulse oximeter comprises a sensor, cables, and an adapter. In addition, the cable holder attaches to the adapter.

For comprehensive safety and use information, be sure to review:

- This guide
- Sensor *Directions for use*
- *Pulse Oximetry Instructions for Use* for your device
- *Sensor Cable Holder User Guide* (PN 627167)
- Your therapy device *Operator's Manual* for information related to SpO<sub>2</sub> monitoring

Only qualified personnel may use the pulse oximeter.

This guide describes how to connect and disconnect the components, and provides a brief overview of the steps to configure the connected therapy device for SpO<sub>2</sub> monitoring.

## 2 SpO<sub>2</sub> monitoring with Masimo SET

The sensor takes continuous measurements to provide accurate, reliable data for SpO<sub>2</sub>, heart rate (pulse), and perfusion index, together with a signal quality indicator. Working with the adapter, the sensor sends this information to the therapy device.

The values of these parameters are integrated into the device's display, support trend graphics and a plethysmogram, and are subject to applicable alarms, all of which are controlled at the device.

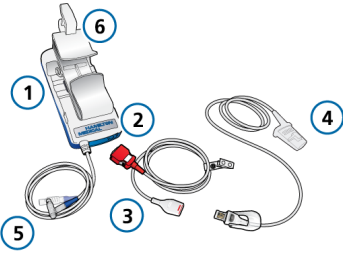
In addition to the standard parameters, you can add one or more monitored parameters with the Masimo rainbow<sup>®</sup> SET option<sup>1</sup>, which you can order together with the Masimo Adapter Kit.

### 2.1 Masimo SET components

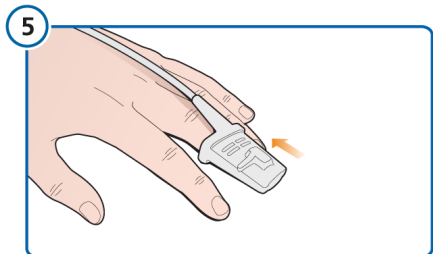
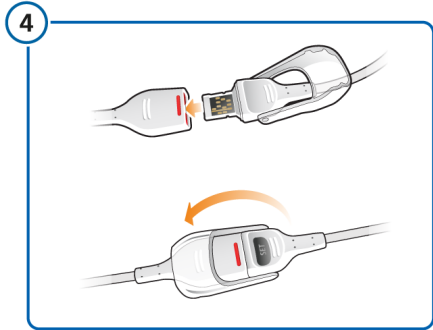
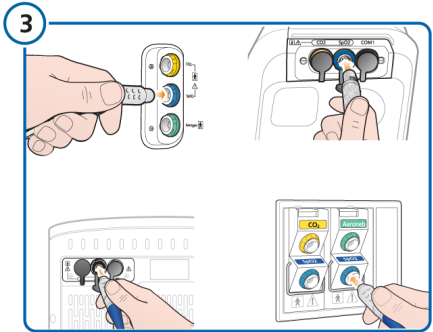
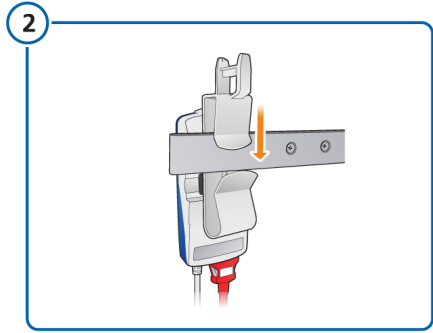
Support for pulse oximetry is available with installation of the appropriate communication board or module (not shown here), depending on your device. For ordering details, see the *Hamilton Medical e-catalog*.

<sup>1</sup> Not available in all markets.

Figure 1. Masimo SET components



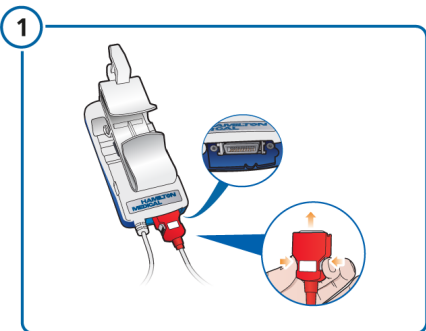
- |  |   |
|--|---|
| 1 Adapter (contains oximeter hardware)           | 4 Sensor  |
| 2 Patient cable connection port                  | 5 Adapter cable (connects adapter to SpO2 port on device) |
| 3 Patient cable (connects to adapter and sensor) | 6 Cable holder  |



For connection and set up information, see Section 3.

Before proceeding, be sure the communication board or module, as appropriate for your device, is already installed.

### 3 Connecting the components



## 4 Disconnecting components

### To disconnect the components

- ▶ Disconnect any components, as needed. For illustration, reverse the actions shown in Section 3.

## 5 Enabling SpO<sub>2</sub> measurement on the therapy device

For the system to be operational, you must also enable the SpO<sub>2</sub> hardware and SpO<sub>2</sub> monitoring on the therapy device, and define SpO<sub>2</sub> sensor settings, as appropriate.

The exact steps depend on your device, and are described in detail in the *Pulse Oximetry Instructions for Use* and in the device *Operator's Manual*.

- **In Configuration**
  - Enable the SpO<sub>2</sub> option
  - Configure sensor data settings
- **In the System > Sensors on/off window**
  - Enable SpO<sub>2</sub> monitoring.

## 6 Disposal

Disposal of parts must follow all local, state, and federal regulation with respect to waste management and environmental protection.

